

RE212

RENAULT Master 2010

//

OPEL Movano 2010

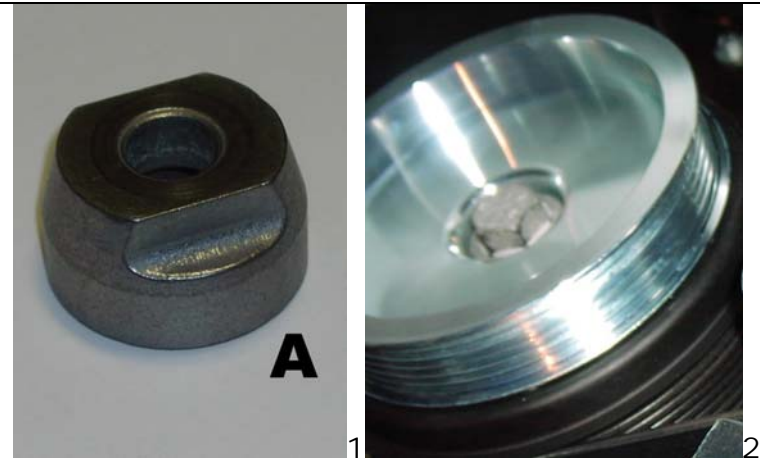
NISSAN NV400 Interstar 2010

//

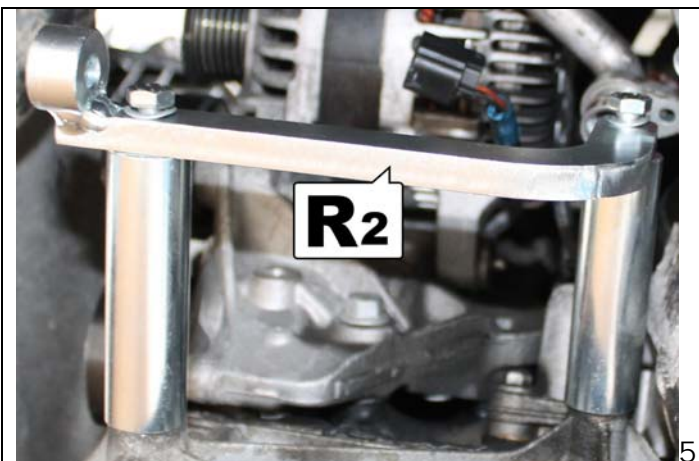
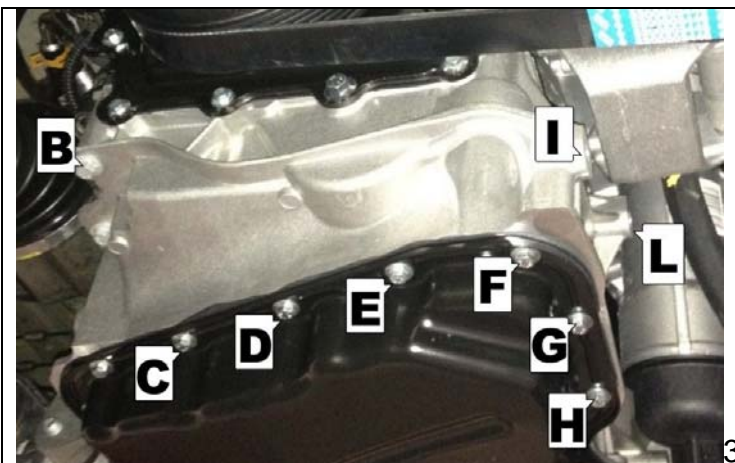
VAUXHALL Movano 2010

Dal 2010 – motore 2300 cc – 4 cilindri – trazione anteriore - senza A/C – senza predisposizione
From 2010 – engine 2300 cc – 4 cylinders – FWD - without A/C – without predisposition

Istruzioni di montaggio kit innesto elettromagnetico
Electromagnetic clutch kit installation instructios



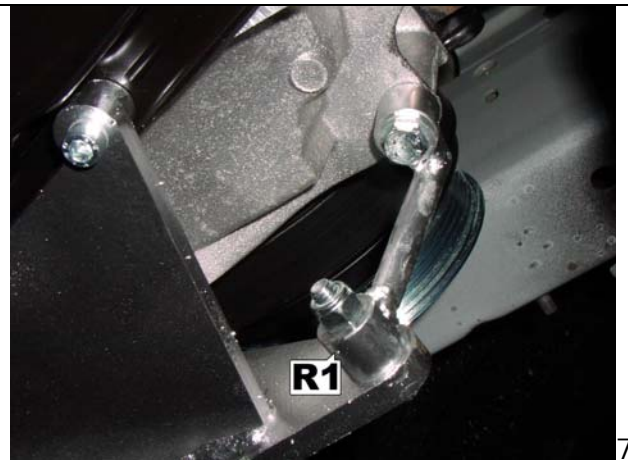
- Smontare il bullone della puleggia motore ,
 - Eliminare il distanziale A , non occorre smontare la cinghia e la puleggia motore.
 - Inserire la puleggia fornita e fissare con bullone originale
-
- *Disassemble the motor pulley bolt .*
 - *Eliminate the spacer A , no need to remove the original engine pulley and the belt*
 - *Insert the supplied pulley and secure with the original bolt*



- Eliminare le viti nei punti B-C-D-E-F-G-H .
 - Montare la staffa di rinforzo R2 .nei fori filettati I L , senza stringere , al momento , le viti
-
- *Eliminate the screws in B-C-D-E-F-G-H*
 - *Install the reinforcement bracket R2 in the threaded holes I L, without tighten, for the moment, the screws*



6



7

- Montare la staffa **1** completa di pulegge di rinvio, inserire la di rinforzo staffa **R1** , poi stringere tutti i bulloni
- *Fit the bracket **1** complete of pulley, insert the reinforcement bracket **R1**, then tighten all the bolts*

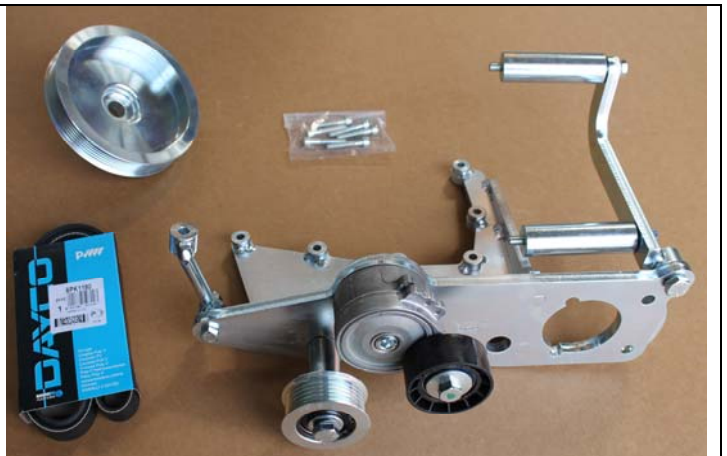
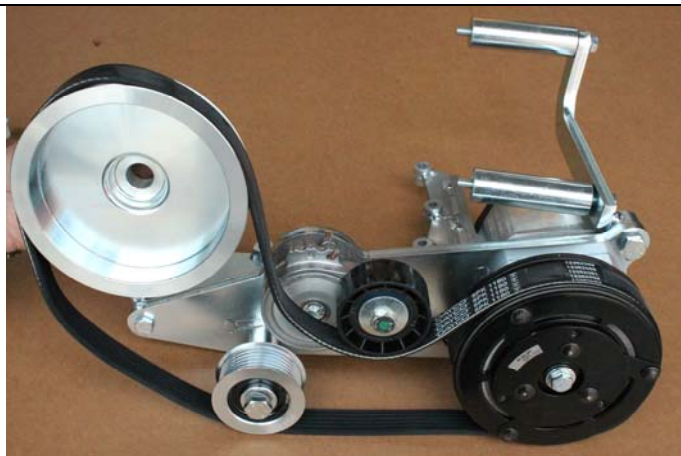


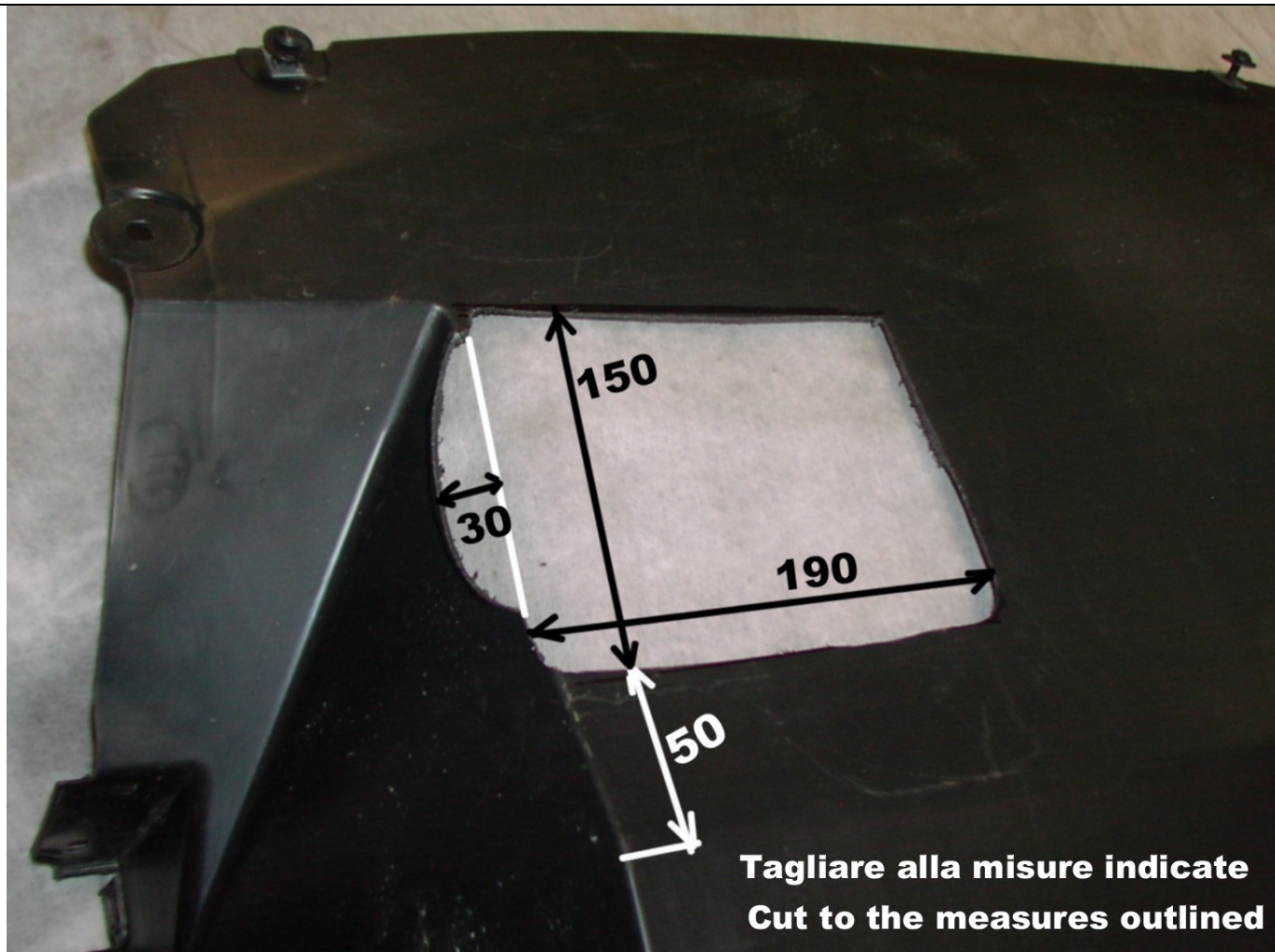
8



9

- Montare innesto elettromagnetico con pompa
- Montare cinghia
- *Assemble the electromagnetic clutch pump*
- *Install the belt*





8

- Modificare la protezione in plastica come nella foto
- *Modify the plastic cover as in the picture*